

Primavera® Contractor

The easy-to-use, affordable way to manage your projects

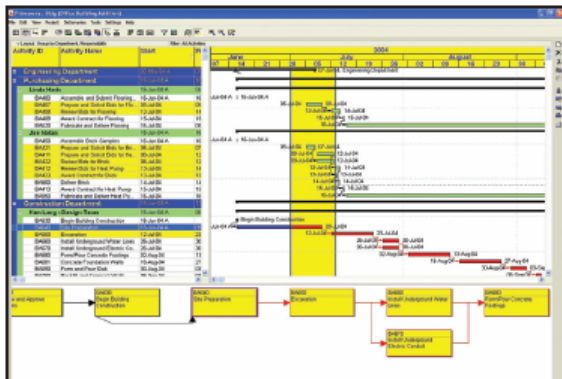
Primavera Contractor was built to get you planning and scheduling immediately – right out of the box. With easy and intuitive navigation, you will begin planning and controlling your project faster than you ever thought possible ensuring that you get paid on time. Online help answers your questions instantly, plus you get 90 days of FREE telephone support from our world-class customer support organization.

Plan and Schedule Projects Quickly and Easily

Add activities quickly and easily, drag and drop activity bars to add constraints or modify your plan, and still take full advantage of Critical Path Scheduling. Interactive, flexible PERT and Gantt charts make it simple for general contractors to communicate with the client as well as other designers and contractors. Future Period Bucket Planning enables Planner/Scheduler to enter a custom distribution, or spread, per resource or role assignment, to model resource requirements in a way that truly reflects how the work is planned and performed. With Primavera Contractor, planning the work and managing changes is quick and easy.

Communicate Status

The Send Project feature enables contractors to e-mail schedules in one simple step to be fully incorporated into the general contractor's project master schedule. Primavera Contractor can also be used to create the master schedule itself. Easily integrate and approve contractor schedules and quickly import and export Microsoft Project and Microsoft Excel data, Primavera Contractor project plans, as well as other industry-standard Primavera software data. With the flexible scheduling power of Primavera Contractor, it simply doesn't get any easier to synchronize your projects.



Manage the critical path to finish a project on time while maintaining a handle on the budget and costs.

Improve Productivity and Coordination

With the new Progress Spotlight, you can look ahead as you plan for the upcoming day, week, or month. By planning activities and linking them to resources, you have everything you need to get the job done. Easily coordinate labor, material, equipment, and subcontractors to ensure on-schedule, on-budget completion. The new Baseline Maintenance tool manages change and automatically adjusts schedules as necessary. With Primavera Contractor, you'll always know what you have completed and what will happen next, for quick and easy communication.



Activity ID	Org	Start	End	%	Dept	Activity Name	Early Start	Early Finish	Late Start	Total Float
04400	01	0	100%	ENR3		Design Review Addition				
04401	0	0	100%	ENR3		Review and Approve Design				
04402	10	0	100%	CON		Site Preparation				
04403	10	0	100%	ENR3		Review and Approve Bid				
04404	10	0	100%	ENR3		Review and Approve PLO/DO				
04405	0	0	100%	PC1		Assemble Bid Samples				
04406	0	0	100%	ENR3		Assemble Technical Data for Bid				
04407	0	0	100%	PC1		Assemble and Submit Proposal				
04408	0	0	100%	CON		Begin Building Construction				
04409	10	0	100%	ENR3		Review Technical Data for Bid				
04410	3	0	0%	PC1		Prepare and Submit Bid for Work				
04411	3	0	0%	PC1		Prepare and Submit Bid for Work				
04412	3	0	0%	PC1		Review Data for Work				
04413	3	0	0%	PC1		Review Bid for Work				
04414	2	0	0%	PC1		Review Bid for Head Pump				
04415	1	0	0%	PC1		Award Contract for Work				

Project Differences Report			
Comparing Office Building Addition to Office Building Addition - 01			
Created by: Admin			
Date: 09/08/2008 10:30			
Data Date: 09/08/2008 10:30			
General Project Data			
Field Name	Value		
Office Building Addition	[[Bldg]]		
Office Building Addition - 01	[[Bldg - 01]]		
General Activity Data			
Activity ID	Activity Name	New From Float	Old From Float
04406	Assemble Bid Samples	0.00	0.00
04407	Assemble and Submit Proposal	0.00	0.00
04408	Begin Building Construction	0.00	0.00
04409	Review Technical Data for Bid	0.00	0.00
04410	Prepare and Submit Bid for Work	0.00	0.00
04411	Prepare and Submit Bid for Work	0.00	0.00
04412	Review Data for Work	0.00	0.00
04413	Review Bid for Work	0.00	0.00
04414	Review Bid for Head Pump	0.00	0.00
04415	Award Contract for Work	0.00	0.00
04400	Design Review Addition	Value not specified in the database	0.00
04401	Review and Approve Design	Value not specified in the database	0.00
04402	Site Preparation	Value not specified in the database	0.00
04403	Review and Approve Bid	Value not specified in the database	0.00
04404	Review and Approve PLO/DO	Value not specified in the database	0.00
04405	Assemble Bid Samples	Value not specified in the database	0.00
04406	Assemble Technical Data for Bid	Value not specified in the database	0.00
04407	Assemble and Submit Proposal	Value not specified in the database	0.00
04408	Begin Building Construction	Value not specified in the database	0.00
04409	Review Technical Data for Bid	Value not specified in the database	0.00
04410	Prepare and Submit Bid for Work	Value not specified in the database	0.00
04411	Prepare and Submit Bid for Work	Value not specified in the database	0.00
04412	Review Data for Work	Value not specified in the database	0.00
04413	Review Bid for Work	Value not specified in the database	0.00
04414	Review Bid for Head Pump	Value not specified in the database	0.00
04415	Award Contract for Work	Value not specified in the database	0.00
04400	Design Review Addition	Value not specified in the database	0.00
04401	Review and Approve Design	Value not specified in the database	0.00
04402	Site Preparation	Value not specified in the database	0.00
04403	Review and Approve Bid	Value not specified in the database	0.00
04404	Review and Approve PLO/DO	Value not specified in the database	0.00
04405	Assemble Bid Samples	Value not specified in the database	0.00
04406	Assemble Technical Data for Bid	Value not specified in the database	0.00
04407	Assemble and Submit Proposal	Value not specified in the database	0.00
04408	Begin Building Construction	Value not specified in the database	0.00
04409	Review Technical Data for Bid	Value not specified in the database	0.00
04410	Prepare and Submit Bid for Work	Value not specified in the database	0.00
04411	Prepare and Submit Bid for Work	Value not specified in the database	0.00
04412	Review Data for Work	Value not specified in the database	0.00
04413	Review Bid for Work	Value not specified in the database	0.00
04414	Review Bid for Head Pump	Value not specified in the database	0.00
04415	Award Contract for Work	Value not specified in the database	0.00

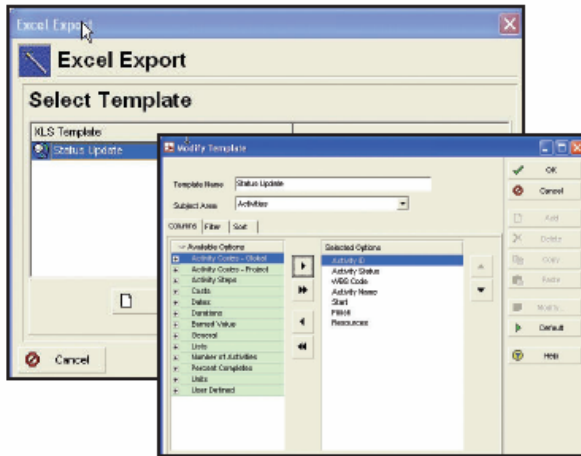
Industry-standard reports with Claim Digger functionality let you analyze project progress.

Maintain Control

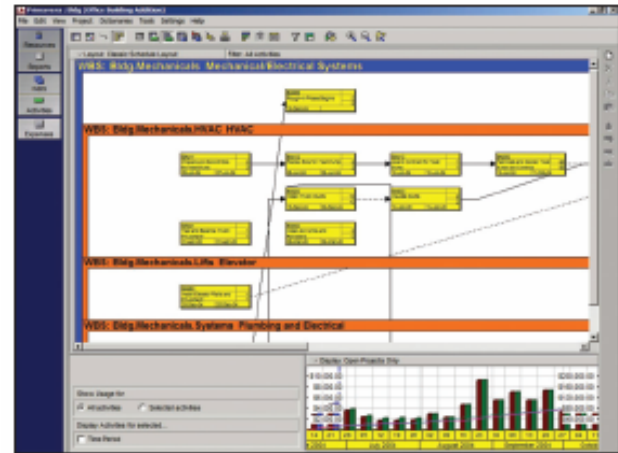
Primavera Contractor allows you to clearly define team accountabilities by assigning activities to each contractor. Compare your time-based budget to actual costs and work performed while maintaining independent estimates of cost to complete. Baselines let you keep track of "what happened" and "what changed" every step of the way. Create unlimited "what-if?" scenarios to explore alternatives. Best of all, Primavera Contractor automatically compares schedules from one month to the next with its unique Claim Digger™ technology.



Key Features



Simple import and export makes communication easy.



Primavera Contractor provides the best graphic representation of the status and organization of your project.

Project Planning

- Plan projects fast with project templates
- Future Period Bucket Planning
- Manage multiple projects
- Assign unlimited hierarchical activity codes
- Organize with true Work Breakdown Structure support

Scheduling and Project Analysis

- Critical Path Scheduling of projects with up to 2,000 activities
- Control budgets, changes, and estimates at completion
- Manually or automatically update progress on activities
- Analyze schedule changes with unique Claim Digger technology
- Progress Spotlight identifies next month's tasks and effectively manages changes in project scope with Baseline Maintenance

Schedule Coordination

- E-mail entire projects with simple Send Project feature
- Automate schedule integration with import/export wizard
- Exchange data seamlessly with all Primavera scheduling products and Primavera Contract Manager
- Import and export Microsoft Project@ schedules
- Import and export project and resource updates
- Combine schedule data from Microsoft Excel@ using import/export

Hardware Requirements

- 256MB RAM required (512MB recommended)
- 500MB minimum storage required
- Full printer and plotter support

Graphics and Reporting

- Create attractive and fully customizable Gantt charts
- Identify driving relationships using PERT diagrams with Trace Logic
- Customize more than 150 industry-standard construction reports
- Save time with easy-to-use report wizard
- Insert photos, drawings, and text in any graphic
- Easy-to-use features enable contractors to undo tasks, combine schedule data, and transfer information.

Resource and Cost Management

- Code unlimited assignments and resources
- Allocate resources to activities using distribution curves
- Compare baseline budget to actual units and costs
- Forecast cost at completion based on percent complete
- Track regular hours, overtime, and shift differentials for accurate forecasting

Two Versions

- **Standard** – simplifies schedules for projects up to 750 activities
- **Deluxe** – handles scheduling more complex projects up to 2,000 activities

WORLDWIDE HEADQUARTERS

Three Bala Plaza West,
Bala Cynwyd, PA 19004, USA
Phone: +1.610.667.8600, 1.800.423.0245
Fax: +1.610.667.7894
info@primavera.com

INTERNATIONAL HEADQUARTERS

3rd Floor, Metro Building, 1 Butterwick
London W6 8DL, United Kingdom
Phone: +44.20.8563.5500
Fax: +44.20.8563.5533
intlinfo@primavera.com



www.primavera.com